

Gus Selig
4-16-14
H.448

Title 10: Conservation and Development

Chapter 15: VERMONT HOUSING AND CONSERVATION TRUST FUND

§ 302. Policy, findings, and purpose

(a) The dual goals of creating affordable housing for Vermonters, and conserving and protecting Vermont's agricultural land, forestland, historic properties, important natural areas, and recreational lands are of primary importance to the **economic vitality and quality of life** of the State.

(b) In the best interests of all of its citizens and in order to improve the quality of life for Vermonters and to **maintain for the benefit of future generations the essential characteristics of the Vermont countryside-side**, and to support farm, forest, and related enterprises, Vermont should encourage and assist in creating affordable housing and in preserving the State's agricultural land, forestland, historic properties, important natural areas and recreational lands, and in keeping conserved agricultural land in production and affordable for future generations of farmers.

Results: FY 2013 and FY 2014

2013

274 affordable housing units

27 farms; 4,041 acres

7 natural area projects;

1,875 acres

2 historic projects

State Investment:

\$9.64 M; 60M leverage

2014

261 affordable housing units

25 farms; 2,798 acres

10 natural area projects;

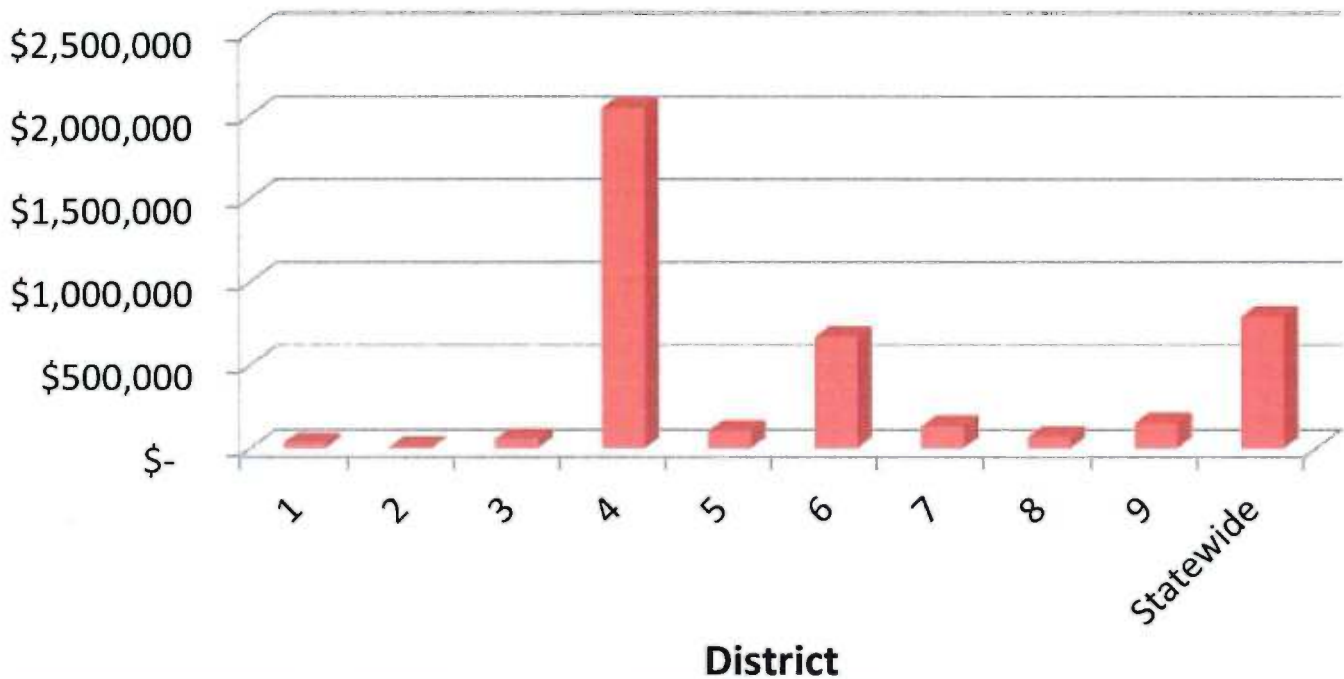
3,166 acres

2 historic projects

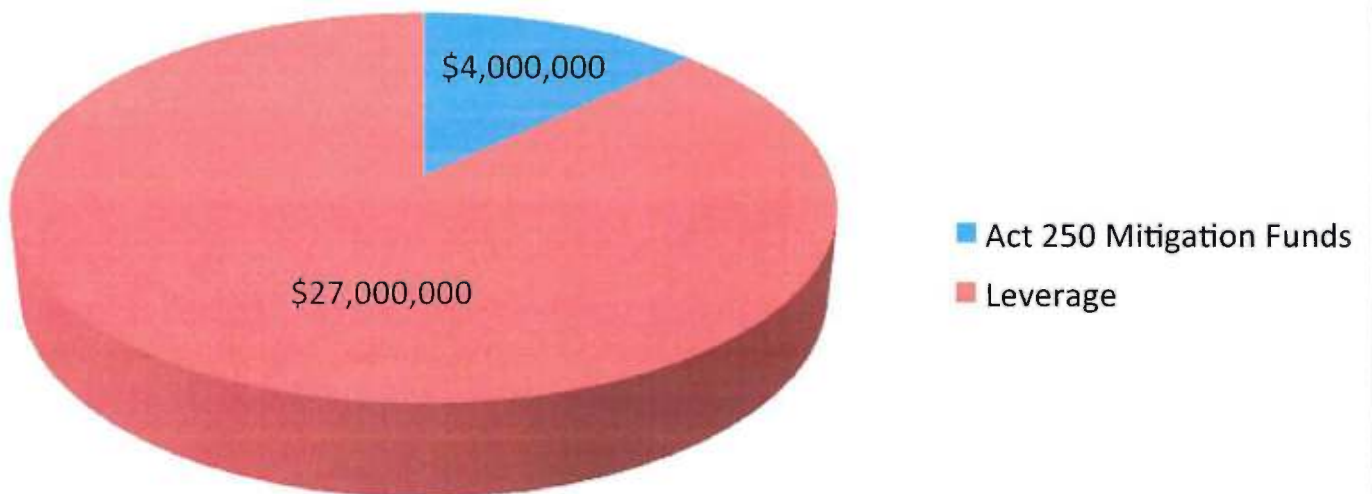
State Investment:

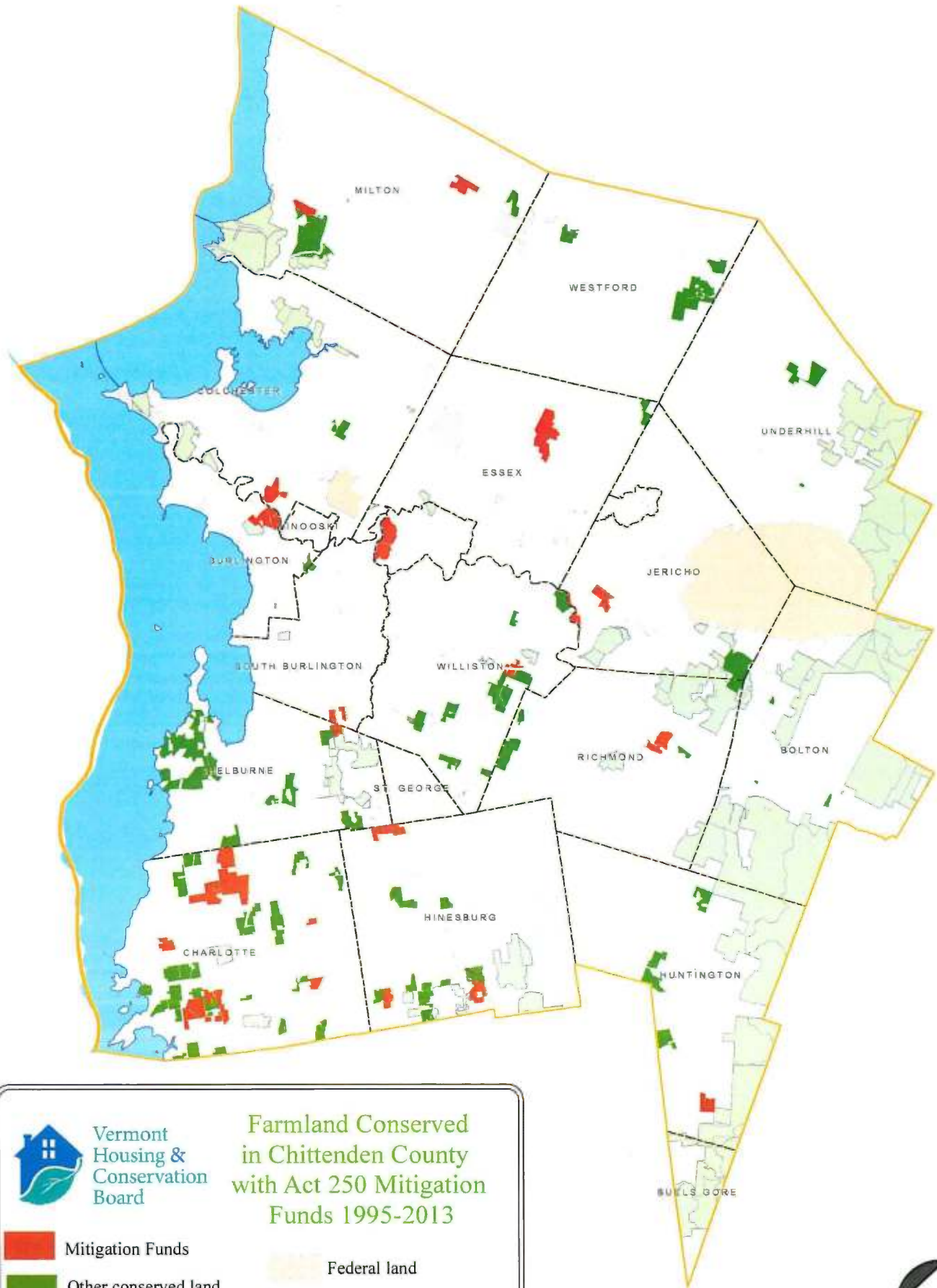
\$9.9M; \$55M leverage

Act 250 Funds Generated By District



Leverage of Act 250 Funds (18,700 acres)





Vermont
Housing &
Conservation
Board

Farmland Conserved
in Chittenden County
with Act 250 Mitigation
Funds 1995-2013



Mitigation Funds



Other conserved land

Municipal land



Federal land



State land





Beth Whiting and Bruce Hennessey operate Maple Wind Farm, raising livestock, poultry, organic vegetables and making syrup. In 2013 they conserved their home farm in Huntington and purchased and conserved land in Richmond. VFFVP participants.



Bread & Butter Farm (LeDuc) Shelburne and S. Burlington - Two farm families on a diversified, 143-acre farm selling milk, grass-fed beef, pork, vegetables, eggs and bread, wholesale and retail. Leveraged with town contributions and local fundraising.

The Thibault Farm in Colchester, conserved by the Vermont Land Trust in 2011. 175-acre dairy farm.



Gus Selig
4-16-14
H-448



Vermont
Housing &
Conservation
Board

Conserved Land in Northwestern Franklin County



VHCB conserved land



Other conserved land



Municipal land



Federal land



State land

ALB

FRANKLIN

HIGHGATE

SWANTON

SHELDON

NORTH HERO

FAIRFIELD

ST. ALBANS TOWN

ST. ALBANS CITY

GEORGIA

